

TASAR DAGGERBOARD PACKING KIT Mk15v1

The Tasar daggerboard is a loose fit in the centrecase. To make it stay at the height you want, you will need to make it a tighter fit by packing the sides of the box. In addition to that the leading edge of the board will be damaged by the front of the box unless you pack that too - and the board will continually rotate aft unless you fill the large void behind the trailing edge. Signal Locker's Daggerboard Packing Kit includes the materials you need to do all these things and to make sure your board stays happy and healthy.

Those familiar with our Mk.10 kit will know that it took ages to install and involved getting covered in glue. We tried to solve those problems with the Mk.11 which featured adjustable thickness of packing to suit different boats - and no glue. In the Mk15 we have changed the aft packer, now using a foam with smaller cell size; and also by having it waterjet cut so that it is a better fit within the box.

In addition to the Daggerboard Packing Kit itself, you can find all the components of the kit listed on the Tasar Spares Price List separately.

Tasar Class Rules...Class rules allow the fitting of a restrictor device aft of the daggerboard and padding on either side:-

C.2.2. A restrictor device for holding the daggerboard forward and vertical may be used provided it is made of material sufficiently resilient to permit the tip of the daggerboard to rotate aft under impact load, e.g. sponge rubber, styrofoam, etc.; and further that it does not extend forward of the aft edge of the daggerboard. No non-resilient material may be incorporated in the restrictor or used as fairing. The padding allowed by C.4.3 may be compressed or removed where the restrictor is fitted in the centrecase.

C.4.3 Padding may be used in the centrecase - the thickness of such padding may be varied to provide an optimum friction fit for the daggerboard, but it shall be of substantially uniform thickness for the length of the centrecase.

Introduction and Overview

The kit uses 'Jap-tape' as the 'restrictor device': we use it on the daggerboard case edges: port and starboard, top and bottom. Jap-tape is a ribbed teflon tape that does not swell when wet and should last at least one season. It is too thin by itself so we attach it to acrylic foam 'sticky-back' of either 1, 2 or 3mm thickness, depending on the gap between your board and your boat. Daggerboard cases and daggerboards differ slightly in thickness. The kit includes some short lengths of Jap-tape that are used to test the best fit for your boat. Once that is established you can make up the thickness you need, and fit full length tapes to all four edges.

To fill the space behind the board, we use a block of soft white PET foam. A 6mm hard VS sponge strip makes the forward edge of this foam block more resistant to being cut by the trailing edge of the daggerboard and there is a foam strip for the front of the box too.



Contents of Kit (see photo 1)

- 4 off 75mm Jap-Tape with 1mm foam
- 1 off roll of Jap-tape: 2m
- 1 off roll of 3mm self-adhesive tape: 3m
- 1 off roll of 1mm self adhesive foam tape: 5m
- 1 off roll of super strong self-adhesive tape: 1m
- Aft Packer: Soft white 32mm foam, shaped to fit aft box
- Plastic sheet to aid fitting of white foam
- Aft Packer Liner: 6mm self-adhesive hard VS sponge
- Forward Packer: 12mm self-adhesive soft neoprene foam



Photo 2

Step 1 - Preparation

-If possible turn boat upside down on a pair of trestles; or possibly on its side. Whichever way you choose, please make sure it is secure.

-Remove all traces of previous daggerboard packing kit; including any remnants of glue etc.

Step 2 - Test the Gap (see photo 2)

-The short sections of Jap-tape have 1mm foam attached. Use them to test the best fit for your boat. You should stick them to the top and bottom edges, approx 150mm aft from the front of the centre case.

-When the short test sections are in place, try the board for size. From under the boat, feed the daggerboard in and upwards. Too tight? Too loose? You need to look at the top and bottom edges individually. Typically the top will be close but the bottom will need additional plys of foam.

-Remove the board and adjust the thickness of the tape. Use the 1mm tape to do this (a 5m roll is included in the pack). You can remove the test sections without damage by lifting one end and then with the round section of a screwdriver, gently prise the tape away from the boat.

-Add to the thickness 1mm at a time until the the board feels right.

-The most common solution is 2x1mm foam at the top and 1x3mm foam at the bottom.

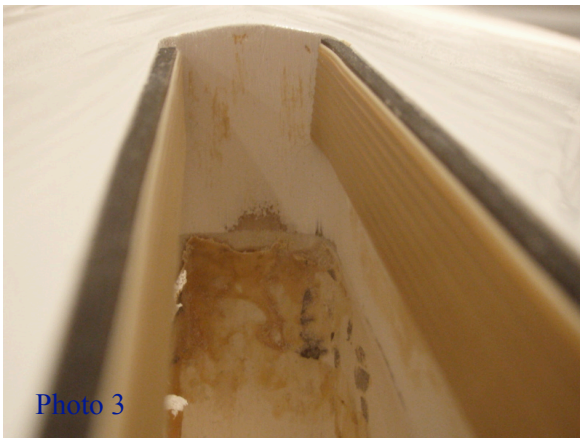


Photo 3

Step 3 - Fit Full Length Tapes (see photo 3)

-Offer up the full length Jap-tape strip and cut to length with scissors.

-Using either one or two plys of the 1mm foam or a single ply of the 3mm foam tape, pack the full length sections of Jap-tape to the final thickness of your test-pieces. (eg. if you found that the bottom needed a total of 3 thicknesses, use a single 3mm ply of foam).

-Peel off the backing paper and fit to the edges of the centerboard case. Push lightly at first; the tapes don't like to be pulled off and replaced but they will take slight adjustments.

-When you are happy with the positioning, push into place firmly. The adhesive takes 24 hours to get full strength but is generally strong enough to be used immediately if you are careful.



Photo 4

Step 4 - Position Aft Packer (see photos 4-9)

-The aft packer is a triangular piece of white PET foam. It is a tight, push fit once the Jap-tape is in place. You feed the foam block into the box from the outside (ie not from the inside of the boat); the thinner top end of the block being fed first. We recommend that you use the plastic sheeting provided and some washing up liquid to help ease it into position as it can be a bit tricky to get in place. Something like this....

-First wrap the polythene around the leading edge of the foam block; you position the foam block with the lower end (the wide end) about 50mm from one end of the sheet. At this point, you should have the polythene folded lengthways, with 50mm of excess polythene at one end and about 600mm excess at the other (see photo 4).

-Next, you feed the '600mm end' into the box (see photo 5). The box is 400mm high, so you should see about 200mm of polythene emerge from the box inside the boat before the foam block makes its entry (see photo 6).



Photo 5



Photo 6



Photo 7



Photo 8



Photo 9

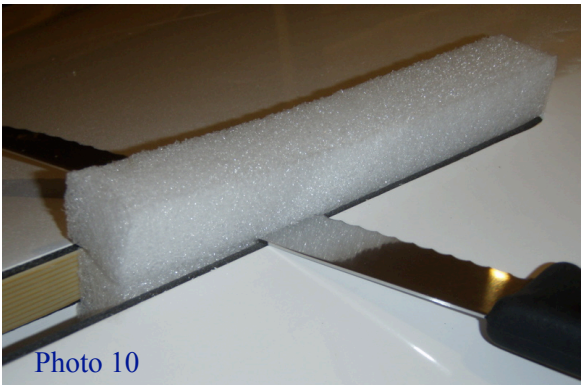


Photo 10



Photo 11



Photo 12

-Working from outside the boat - push the first 50mm or so of the foam into the box (still inside the poly sheet) (see photo 7). Once you have pushed the first 50mm into the box, it is better to pull the rest of the block through with the poly sheet (see photo 8). You might want to use some washing up liquid to lubricate the polythene as it slides into the box; and then working from the inside of the boat, smoothly pull the poly sheet into the boat - bringing the foam block with it. At this point the foam will be too far forward - but this is OK - you can push it aft later.

-When the top of the block emerges through the top of the daggerboard box you stop pulling! Next job is to pull the poly sheet off without displacing the foam. Working from both inside and outside the boat you can pull the sheet forwards while holding the foam in place (see photo 9).

-Finally use a broomstick handle to push the foam aft and into position. Don't poke it with the end of the handle! This would damage the foam. You'll need to hit the full length of the foam block with the broom handle quite hard - making it a snug fit into the aft end of the box.

-Then use a very sharp knife to cut off any excess neatly - sharp and wet is even better (see photo 10).

Step 5 - Install Aft Liner (see photo 11)

-The white foam packer is soft, and the daggerboard will cut into it unless you protect it's front edge with the hard VS sponge strip provided.

-The VS strip has self adhesive tape on one side, but it is not good enough to stay in place for a season - so we use a second (much stickier) self adhesive tape as well. The kit includes 1m of super strong 'Venturetape' (see photo 12) - put a strip of this down the front edge of the aft packer and peel off the backing paper, before applying the VS sponge strip.

-Next, peel the backing paper off the VS sponge strip, and feed it through the centre case until it protrudes top and bottom. Push it aft into position so that the two self-adhesive surfaces come together (using the broom handle again possibly) and then trim the excess top and bottom with a knife or scissors.

Step 6 - Install Forward Packer (see photo 13)

-The forward packer is a soft self-adhesive neoprene foam strip.

-Simply strip off the paper backer and add a layer of Venturetape. Then feed the foam strip down the centreboard case working from either top or bottom, and pushing it forward with the end of broomstick handle or similar.

IT'S OVER !! Still with us? Sense of humour still intact? At the very least you deserve your newly packed dagger board case to be the envy of the dinghy park.

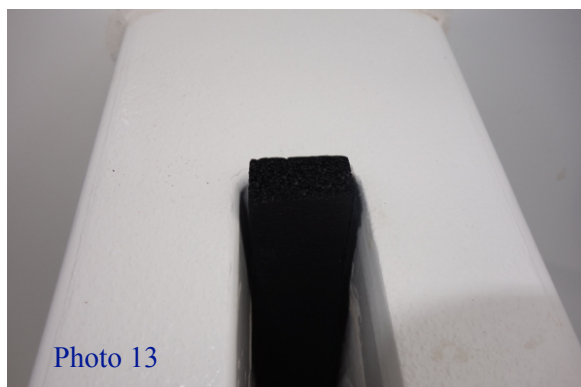


Photo 13